

## OGRE B215-J24 Mono Solar Panel

OGRE solar panels are engineered for applications that require maximum power, reliability, and durability.

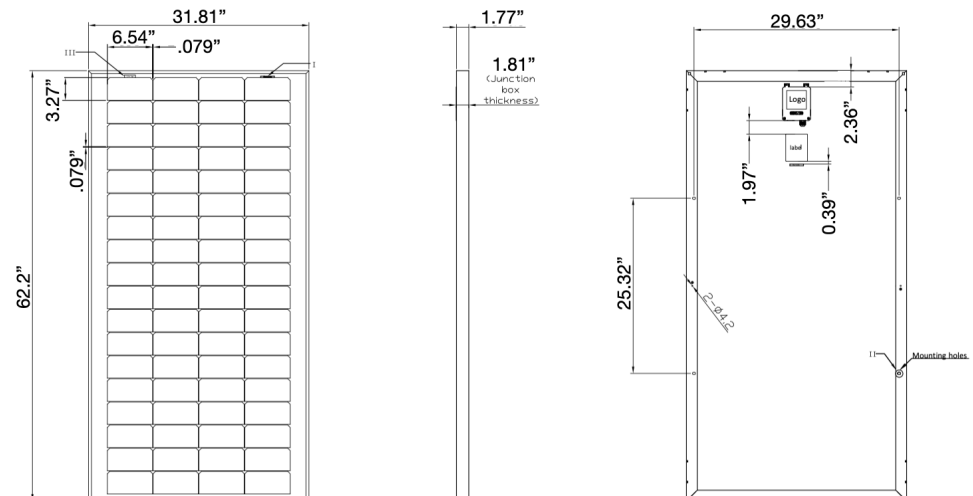
OGRE is field-proven in remote locations and harsh environments across the U.S. and Canada.

### Features:

- Extra heavy gauge, anodized aluminum frame is designed for ease of mounting and durability against elements like wind torque
- High efficiency back-contact monocrystalline cells
- Anti-reflective glass coating that increases sunlight absorption
- Conversion efficiencies of >22% for off grid applications
- Higher output with a smaller footprint - same size as a 180 watt solar panel
- Rain tight junction box is approved for hazardous locations and has four 1/2" conduit / cable fitting knock-outs
- 25-year limited warranty of 80% power output; 10-year limited warranty of 90% power output; 5-year limited warranty of materials and workmanship

Electrical Specifications:	OGRE B215-J24
Max Power	215 Watts
Max Power Voltage	41.22V
Max Power Current	5.22A
Open Circuit Voltage	47.59V
Short Circuit Current	5.49A
Maximum System Voltage	1500V
Series Fuse Rating	20A
Power	215W
Voltage	41.22
Current	5.22
Cell Efficiency	22.8
Number of Cells in Series	18
Cell Type	182 mono + 3.2mm glass
Number of Strings in Parallel	4
Max Power Tolerance	±5%
Mechanical Characteristics:	
Weight	30.86 lbs.
Dimension	62.2" x 31.81 x 1.77
Thickness, Including Junction Box	1.81"
Frame Material Type	6063-T5

ELECTRICAL PARAMETERS AT STANDARD TEST CONDITIONS



## Ordering Information

Authorized Distributor:



800-898-2899

sales@automation-x.com

## OGRE B215-J24 Mono Solar Panel

**AUTOMATION-X FIVE CODE**

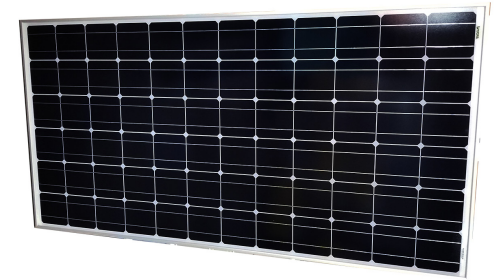
-09526

**ITEM NAME**

OGRE Solar Panel B215-J24

**FIND ONLINE AT**

www.automation-x.com



## Order with: OGRE Solar Panel Brackets

**AUTOMATION-X FIVE CODE:** -07207

**ITEM NAME:** OGRE Solar Panel Bracket Fixed 140215

**DESCRIPTION:** Fits (1) OGRE 140-215 Watt panel, pole mount, fixed, tilt 55 degrees, aluminum, includes hardware.

**AUTOMATION-X FIVE CODE:** -14240

**ITEM NAME:** OGRE Solar Panel Bracket Multipro-L 140215A

**DESCRIPTION:** Fits (1) OGRE 140-215 Watt panel, adjustable, tilt 15/45/60 degrees, aluminum, molded frame, U-bolts and hardware included.

**AUTOMATION-X FIVE CODE:** -78036

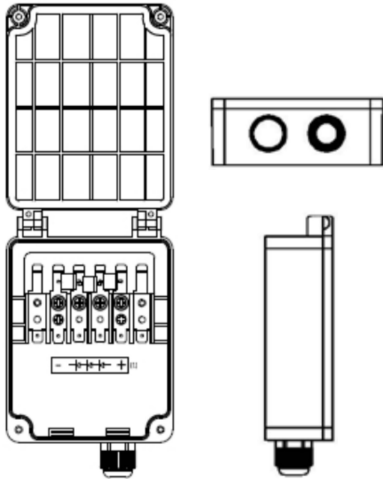
**ITEM NAME:** OGRE Solar Panel Bracket Multipro-2L 140215A

**DESCRIPTION:** Fits (2) OGRE 140 or 215 Watt panels, side pole mount, adjustable, aluminum, (2) L brackets, (2) channels, (2) legs, U-bolts and hardware included.

**AUTOMATION-X FIVE CODE:** -67829

**ITEM NAME:** OGRE Solar Panel Bracket Multipro-3L 215A

**DESCRIPTION:** Fits (3) OGRE 215 Watt panels, pole mount, adjustable, aluminum material, includes: (2) L bracket, (2) channel, (2) legs and hardware.



## Certifications, Ratings, and Testing:

- Class 1, Div 2, Groups A, B, C, D
- Hazardous Locations Type IP65
- T3C@Ta= -40°F to >185°F
- Manufactured in ISO9001 Factory
- Flash data (sun simulator) & EL test is performed on every panel
- Rain tight junction box is approved for hazardous locations and has four 1/2" conduit / cable fitting knock-outs

