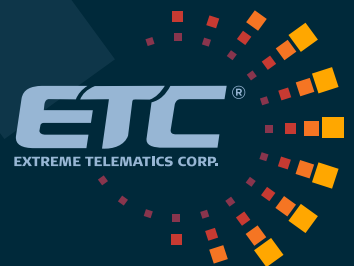
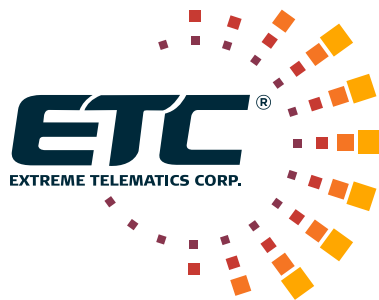


# PLUNGER LIFT SOLUTION

by Extreme Telematics Corp.

**EXPERTS IN ADVANCED  
TECHNOLOGY FOR THE OILFIELD**





---

[www.ETCorp.ca](http://www.ETCorp.ca)

# Table of Contents

- ALiEn<sup>2</sup> ..... 5
- ALiEn<sup>2</sup> Accessories & Replacement Parts ..... 8
- Solar Panel ..... 10
- Cyclops ..... 11
- Sasquatch.....12
- Link ..... 14
- Vision .....15

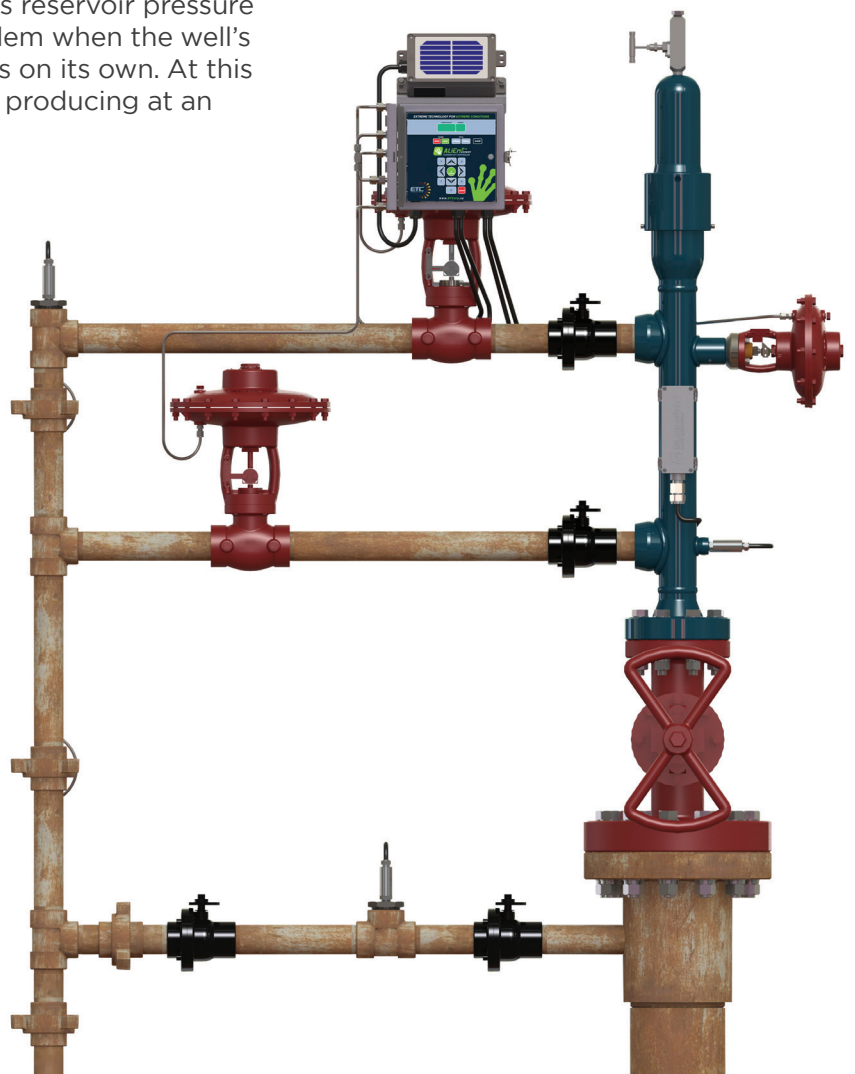
# Plunger Lift Solution

Optimize production of your well with a plunger lift system.

One of the most cost effective methods of removing accumulated liquids from the tubing and annulus of a high Gas/Liquid Ratio (GLR) natural gas or oil well, plunger lift has become increasingly popular throughout North America since the 1980s.

As a well ages, production naturally declines as reservoir pressure decreases, and liquid loading becomes a problem when the well's energy is no longer sufficient to remove liquids on its own. At this point, intervention is required to keep the well producing at an economical rate.

*Plunger lift has been proven to dramatically increase production, and is a low cost, low maintenance solution to liquid loading bearing very minimal environmental impact.*



## PLUNGER LIFT SYSTEM

Typical system components include a controller, plunger sensor, plunger, lubricator, motor valve, and bottom hole assembly.

The controller is the “brains” of the system – It tells the motor valve when to open or close, and monitors the plunger arrival and pressure sensors. There are many controllers available in the form of standalone plunger lift controllers or remote terminal units (RTUs), each presenting their own set of features and benefits. Basic controllers serve to simply run the system while more complex controllers are able to automatically optimize production and allow for remote monitoring and control as part of a SCADA system.

The lubricator extends the wellhead to receive the plunger at surface, and contains a high impact spring to absorb the impact of the plunger as it arrives. Several different styles of lubricators are available, featuring single or dual ports and threaded or flanged connections. Lubricators made from different materials are also available to account for different types of gas being produced (sour or sweet), and adapt to environmental and safety conditions at the well site. Some lubricators feature an auto catch to allow the plunger to be held at surface after it has arrived to allow the well to flow more freely.

The motor valve is installed at the wellhead to shut in or open up the well to allow gas to flow to the sales/production line.

The bottom hole assembly is installed just above the perforations deep within the well to absorb the impact of the plunger, ensure the plunger stops above the perforations so the gas comes in below the plunger, and prevent damage to the seating nipple and tubing.

The plunger arrival sensor is a small but critical component of the plunger lift system. Its purpose is simple; to notify the controller of a plunger’s arrival at surface. A plunger velocity sensor replaces the arrival sensor to signal arrivals and record a plunger’s velocity, giving the ability to calculate kinetic energy to comply with the API 11 PL standard kinetic energy rating on a lubricator.

The plunger’s primary function is to act as an interface between gas and liquids inside the tubing or casing; carrying a column of fluid above it to the surface of a well. Plungers come in a variety of types to meet the needs of a particular well.

### BENEFITS

- Ability to optimize production
- Low capital investment
- Low maintenance cost
- Minimal well downtime
- No external energy required
- Reduced gas losses
- Minimal environmental impact
- Reduced paraffin and scale buildup
- Remote monitoring and control
- Stable well production
- Longer well life

## USING PLUNGER LIFT TO ENHANCE PRODUCTION

This form of artificial lift utilizes a natural gas well's own energy to run a plunger up and down the wellbore. In its simplest form, a plunger cycle begins when an electronic controller located at the wellhead actuates a motor valve to shut in the well temporarily, cutting off gas flow and allowing the plunger to fall from the lubricator down the well inside the well's tubing or casing.

The plunger falls through accumulated fluids and comes to rest on the bottom hole assembly. After a set time, when the plunger is assumed to be at bottom, the controller signals the valve to open again, and the pressure in the well below forces the plunger back up the wellbore carrying the column of fluid.

As the plunger returns to the lubricator, fluids are forced out through the sales line, or in some cases, out to a holding tank. At this point, the arrival of the plunger is detected and the controller moves into the next phase of the cycle, commonly referred to as the "afterflow" or "sales" portion of the cycle. This portion of the cycle is carried out for a period of time determined and set by the operator, after which the cycle beings again with the closing of the valve.

The goal is to minimize the amount of close time (not producing = not making money!!) and maximize afterflow time while avoiding plunger "fast trips" which are dangerous and cause damage to surface equipment. There are many system configurations available through the use of different plungers, pressure sensors, surface equipment, and time or pressure based algorithms existing in modern controllers.

*Modern controllers, like the ALiEn<sup>2</sup>, contain optimization algorithms that track the plunger's arrivals and make automatic adjustments to close and afterflow times to maximize production.*



Peak production with minimal operator intervention.

## ALiEn²

ALiEn² is the most feature-rich plunger lift controller in its class. Patented optimization algorithms achieve maximum production with minimal operator intervention. Use as a simple well intermitter or in conjunction with a plunger and arrival sensor to optimize production. Protect your well by using a line pressure device to shut in on high line pressure. Log your plunger's mileage with Plunger Tracking, and use Vent Tracking to keep tabs on vent time.

ALiEn²'s standard Modbus communication port enables remote monitoring and control, and is preconfigured to work with several popular SCADA

solutions. ALiEn² can also be configured to work with your internal SCADA system. No SCADA? ALiEn² is fully functional and accessible right on site.

ALiEn² and ALiEn² Expert come certified to the highest and most up-to-date safety standards available, providing unlimited safe installation locations. Features such as Fast Velocity, Dangerous Velocity, and a variety of configurable alarms protect your wellhead equipment and prevent accidents.

## FEATURES AND BENEFITS

- Class I, Zone 0 (Div 1) Certified
- -40°F to +160°F Operation
- 8+ Months\*\* of Battery Standby
- Numeric/Navigation Interface
- Operate up to 3 Valves\*\*
- RS-485 Modbus Communications
- Adaptive Seeking Velocity Optimization™
- Pressure Optimization
- Flexible Connector/Solenoid Locations
- Universal Mounting
- Type 4 Powder Coated Steel Enclosure
- Locking Door



\*\*Expert model



*ALiEn<sup>2</sup>'s intelligent and effective optimization algorithms will help you achieve maximum production.*

## ADAPTIVE SEEKING VELOCITY OPTIMIZATION™

This patented\* algorithm reduces the need for operator intervention by making automatic adjustments that are proportional to the current flow/close time.

When Adaptive Seeking Velocity Optimization™ is used with a plunger arrival sensor such as Cyclops®, ALiEn<sup>2</sup> reacts to the average velocity of the plunger, making proportionate changes to the amount of Close and Afterflow time for the well. The user specifies a Target Rise Velocity, which ALiEn<sup>2</sup> then works to achieve. For best results, use a Sasquatch® Plunger Velocity Sensor in conjunction with Adaptive Seeking Velocity Optimization™ to maximize production using real-time Surface Velocity. ALiEn<sup>2</sup> is the first plunger lift controller capable of optimizing on Surface Velocity; a standard feature in the ALiEn<sup>2</sup> Expert model, available as an upgrade for the ALiEn<sup>2</sup>.

## PRESSURE OPTIMIZATION

Use a combination of Line Pressure, Tubing Pressure, Casing Pressure\*\*, and Differential Pressure\*\* to optimize the well. ALiEn<sup>2</sup> automatically adapts to use enabled devices. Optimize on Flow Rate (AGA 3 table based) when using a Line Pressure and Differential Pressure sensor.

## LOAD FACTOR

Load Factor is a parameter that can be used to determine when to open a plunger lift well to rise the plunger. It is a ratio of the slug size (casing pressure - tubing pressure) to the lifting pressure (casing pressure - line pressure). It is used by a number of different control systems as a standard optimization setting and is a standard feature on the ALiEn<sup>2</sup> Expert plunger lift controller. Please note that this feature requires a pressure splitter.

\* Patent Number US 9,297,238



## TECHNICAL DATA

	<b>ALiEn<sup>2</sup></b>	<b>ALiEn<sup>2</sup> Expert</b>
Operating Temp	-40°F to +160°F	-40°F to +160°F
Current Draw	Typ. - 0.5 mA, Max. - 190 mA	Typ. - 0.5 mA, Max. - 190 mA
Battery	6 V, 5 Ah	6 V, 8 Ah
Valves Supported	1-2	1-3
Standby Time	5+ Months*	8+ Months*,**
Solar Panel	6 V, 1.1 W Rugged Solar Enclosure	6 V, 1.1 W Rugged Solar Enclosure
Arrival Sensor	Cyclops, Most other vendors	Cyclops, Sasquatch, Most other vendors
Other Inputs	Dry contact switch or 0.5 V to 4.5 V sensor Line Pressure Upgrade to Tubing Pressure Additional input available with pressure splitter	2 x dry contact switch or 0.5 V to 4.5 V sensor Line Pressure Tubing Pressure Casing Pressure Differential Pressure Additional input available with pressure splitter
Optimization	Upgrade to Adaptive Seeking Velocity Optimization™ Upgrade to open on TP	Adaptive Seeking Velocity Optimization™ Open on CP, TP, or CP-LP Close on CP, DP, or Flow
Cycle History	Last 25 Cycles	Last 25 Cycles
Daily History	Current Day + 14 Previous Days	Current Day + 14 Previous Days
Communications Interface	2 wire RS-485 Modbus Slave	2 wire RS-485 Modbus Slave 2 wire RS-485 Modbus Master
Certifications	Class I, Zone 0, Ex/AEx ia [ia] IIB Class I, Division 1, Groups C and D	Class I, Zone 0, Ex/AEx ia [ia] IIB Class I, Division 1, Groups C and D

\*Average temperatures of 0°F, 24 valve operations a day, 10 minutes a week of display-on time, and a Cyclops arrival sensor.

\*\*Expert model.



# ALiEn² Accessories & Replacement Parts



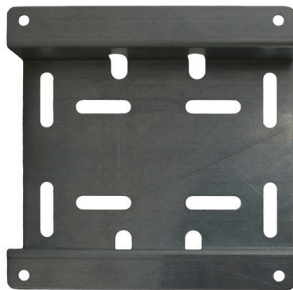
## ALiEn² SIMULATOR

Use this free tool for testing, training, and troubleshooting. This simulator functions exactly the same as the actual product, and includes the ability to manipulate simulated well conditions including battery & solar voltage, pressure (line, casing, differential, tubing) velocity readings, and plunger arrivals.



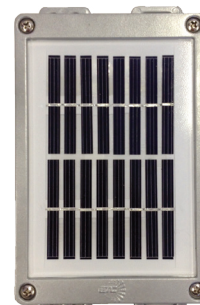
## UPGRADE, TEST & TROUBLESHOOT ALiEn² WITH LINK AND VISION SOFTWARE

Link connects ETC plunger lift controllers, Cyclops plunger arrival sensors, and Sasquatch plunger velocity sensors to our Vision Device Management platform. Keep your controller loaded with the latest features using Vision Device Management Software. Product updates, documentation, testing & troubleshooting for ETC controls and sensors are available in the included resource library.



## UNIVERSAL MOUNTING BRACKET

Each ALiEn² comes with the innovative Universal Mounting Bracket. With support for wall, single vertical stud, single horizontal stud, vertical pipe, horizontal pipe, or valve mount, this is the only mounting bracket you will ever need.



## SOLAR PANEL

ETC's Solar Panel is designed for use with both the ALiEn² and ALiEn² Expert series of controllers to provide continuous operation. Even on the cloudiest of days, this panel will provide enough power to keep the battery topped up. It comes in a rugged type 4 cast aluminum enclosure.



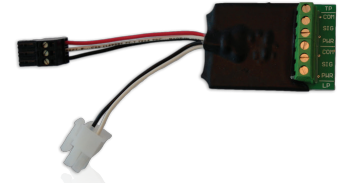
## SOLAR PANEL MOUNTING BRACKET

Quickly mount your controller solar panel to virtually any surface, including right on top of your controller.



## HIGH QUALITY PRESSURE SENSORS

ETC Pressure sensors feature all stainless steel wetted parts, a broad selection of electrical and pressure connections and a wide choice of electrical outputs.



## PRESSURE SPLITTER

The Pressure Input Splitter allows additional Pressure Transducers to be connected to the ALiEn<sup>2</sup> Expert plunger lift controller.



## BATTERY CHARGER

A quick and convenient way to top up a spare controller battery prior to replacement.



## SOLENOID VALVE

Available in single or dual valve configurations, with or without elbows.



## SOLENOID POPPIT

Solenoid poppits are replaceable to prolong life expectancy of solenoids for ETC controllers.



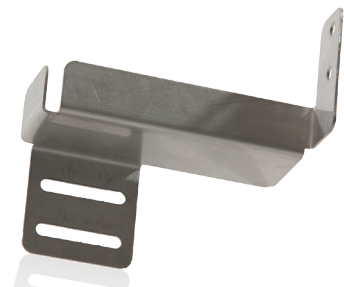
## 5Ah CONTROLLER BATTERY

With enough storage to power an ALiEn<sup>2</sup> controller for 5 months on a single charge, the 5AH Controller Battery is rechargeable, making it quick and easy to replace.



## 8Ah CONTROLLER BATTERY

Lasting up to 8 months on a single charge, the 8AH rechargeable controller battery that comes standard with the ALiEn<sup>2</sup> Expert controller is easy to replace.



## CONTROLLER BATTERY BRACKET

If you've lost or damaged the battery bracket in your ETC controller, this bracket can be replaced. One bracket works for both 5Ah and 8Ah batteries.

# Solar Panel

Recharge with ETC's compact 1.1 W solar panel, which comes standard with every ALiEn<sup>2</sup> plunger lift controller.



## RUGGED

ETC's solar panel comes in a rugged cast aluminum enclosure. This type 4 enclosure protects the terminal block so that it can withstand the harshest conditions and the tempered glass cover protects the solar cells, ensuring extended durability.

## FLEXIBLE

ETC's solar enclosure is designed with careful attention to ease of installation. Built-in mounting supports both a wall and pole mount using a standard U-bolt between 2" – 3 1/4". ETC's solar panel mounting bracket allows for more mounting options, including right on top of your controller. The two-part design allows the base to be mounted prior to terminating the wiring, and the enclosure lid containing the electronics fastens securely with captive screws. The pre-drilled 1/2" NPT port enables the use of armoured cabling with a Teck connector or instrumentation cabling with a standard cable gland.

## OPERATION

This panel is designed for use with both the ALiEn<sup>2</sup> and ALiEn<sup>2</sup> Expert series of controllers to provide continuous operation. Even on the cloudiest of days, this panel will provide enough power to keep the battery topped up.

## TECHNICAL DATA

Peak Power	1.1 W
Open Circuit Voltage	9.76 V
Max Power Voltage	8.16 V
Short Circuit Current	149 mA
Max Power Current	135 mA
Certifications	Class I, Div 2, Groups A, B, C, & D, Temperature Code: T3C
Enclosure	Type 4 Cast Aluminum



Utilizing modern Geomagnetic Sensing Technology™, Cyclops is the most advanced and reliable plunger sensor available.

## MISSED ARRIVAL? FALSE DETECTS? NOT ON MY WATCH.

Cyclops is not your average plunger arrival sensor. Utilizing modern Geomagnetic Sensing Technology™, market-leading Cyclops is the most advanced and reliable sensor available.

Within the rugged enclosure lies a geomagnetic “eye” and a tiny yet powerful microprocessor. When powered, Cyclops is actively watching for a change in the earth’s magnetic field around it to signal plunger arrival. Constantly filtering out “background noise” from nearby equipment or environmental changes, Cyclops is able to consistently detect any type of plunger as it arrives at surface.



ETC’s innovative line of plunger sensors provide advantages such as the ability to adjust sensitivity, upgrade software, or troubleshoot problematic wells right at the well head.

## FEATURES AND BENEFITS

- Digitally Controlled Output
- Intrinsically Safe or Explosion Proof
- Compatible with Wireless Solutions
- -40°F to +160°F Operation
- 5 V to 24 V Operating Voltage
- Low Power
- Adjustable Sensitivity
- Self Calibrating
- 1/2” NPT Port

### TECHNICAL DATA

Supply Voltage	5 V - 24 V DC
Current Draw	Typ. - 0.77 mA, Max. - 0.80 mA
Switch Interface	Dry contact, normally open, 100 Ω impedance
Communications Interface	1 wire RS-485 test interface
Operating Temperature	-40°F to +160°F
Certification (IS Model)	Class I, Zone 0, AEx ia IIB T4 Class I, Division 1, Groups C, D T4; Ex ia IIB T4 Class I, Zone 2, Group IIC T4 Class I, Division 2, Groups A, B, C, D T4
Certification (ATX Model)	CE Ex II 3G Ex nA IIC T4 Gc
Certification (ExP Model)	Class I, Zone 1, AEx d IIB T4 Class I, Division 1, Groups C, D; Ex d IIB T4



Sasquatch uses the surface velocity and mass of the plunger to calculate the kinetic energy of each plunger arrival in real time.



## SASQUATCH IS THE NEXT STAGE IN THE EVOLUTION OF PLUNGER DETECTION.

The unique design of Sasquatch is based on the proven technology behind the Cyclops® plunger arrival sensor. Repetitive fast plungers are a common problem in plunger lift causing costly damage to equipment and production downtime.

A lubricator breach can lead to incident reports, spills and injuries. Hoping to avoid these issues, producers replace lubricator springs and plungers on a regular basis. In many cases, perfectly good equipment is being prematurely discarded, leading to wasted labor and equipment costs. Sasquatch gives you the power to reduce or even prevent these occurrences and prolongs the life of wellhead equipment by enabling detection of fast plungers long before they cause problems.



*Sasquatch is the first and only sensor of its kind, based on the proven Geomagnetic Sensing Technology™ behind the Cyclops arrival sensor, and boasts many of the same features and benefits. It not only detects the arrival of the plunger, but also measures and stores the instantaneous surface velocity of the plunger.*

As the first ever plunger velocity sensor, not only will Sasquatch signal that a plunger has arrived, velocity of the plunger will be measured at surface. A patented algorithm\* quickly and accurately measures the surface velocity of a plunger as it travels by the sensor. If plunger mass is provided, Sasquatch can calculate kinetic energy, then alarm on a set number of hard hits or a single dangerous hit. Kinetic energy can also be used to alarm on exceeding a total amount of kinetic energy (spring wear) or total number of hard hits.

Sasquatch acts as a Modbus Slave, with an integrated RS-485 communications port. No SCADA? No problem! Up to 120 arrivals with date, time and velocity information are available to download right from the unit on-site. For best results, use Sasquatch in conjunction with the ALiEn<sup>2</sup>'s patented Adaptive Seeking Velocity Optimization™ to improve production. This intuitive algorithm reduces the need for operator intervention by making adjustments that are proportional to the current flow/close time.

ETC's innovative line of plunger sensors provide advantages such as the ability to adjust sensitivity, upgrade software, and use real time data to troubleshoot problematic wells.

***Use Sasquatch in conjunction with ETC's patented Adaptive Seeking Velocity Optimization™ in the ALiEn<sup>2</sup> Expert for best results.***

## FEATURES AND BENEFITS

- Record Plunger Surface Velocity in Real Time
- Calculate Kinetic Energy
- Intrinsically Safe
- Compatible with Wireless Solutions
- -40°F to +160°F Operation
- 5 V to 24 V Operating Voltage
- Low Power
- Adjustable Sensitivity
- Built in Alarms
- Self Calibrating
- Rugged Watertight Aluminum Enclosure
- Built-in Mounting
- 1/2" NPT Port
- Remote Communication via Modbus

### TECHNICAL DATA

Supply Voltage	5 V - 24 V DC
Current Draw	Typ. - 9.05 mA, Max. - 13.3 mA
Switch Interface	Dry contact, normally open, 100 Ω impedance
Communications Interface	2 wire RS-485 Modbus Slave
Range	164 ft/min to 3,281 ft/min
Accuracy	+/- 8% @ 820 ft/min
Operating Temperature	-40°F to +160°F
Certification	Class I, Zone 0, AEx ia IIC T4 Class I, Division 1, Groups A, B, C, D T4; Ex ia IIC T4 Class I, Zone 2, Group IIC T4 Class I, Division 2, Groups A, B, C, D T4

\* Patent Number US 9,587,479



Link is designed to connect Vision Device Management software to ETC controllers and sensors.

## LINK

Link is an all-in-one adapter that is designed to connect a PC running Vision Device Management software to ETC controls and sensors.

## LINK IS

Link IS can be used to connect a PC running Vision to an ETC plunger arrival sensor right at the wellsite. Link IS features an integrated intrinsically safe barrier and 50 feet of ruggedized cable that allows you to safely connect to sensors and controllers that are already installed on the well head.



Link is currently compatible with the following ETC products:

- ALiEn<sup>2</sup>
- Cyclops
- Sasquatch



*Sasquatch*



*ALiEn<sup>2</sup>*



*Cyclops*

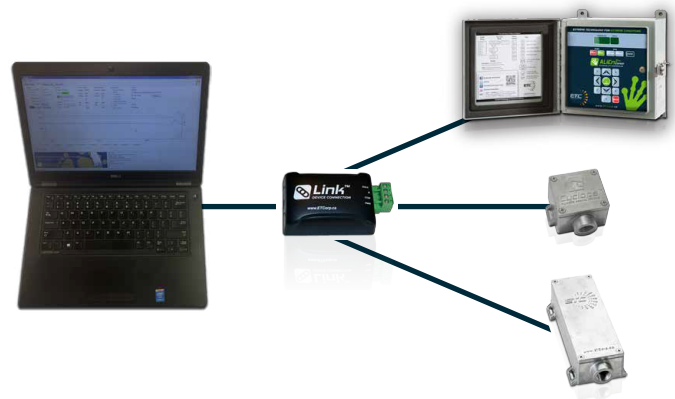




## Product updates, documentation, testing & troubleshooting for ETC controls and sensors.

Vision Device Management is a free PC-based tool used with Link™ to configure, test, and troubleshoot ETC controls, sensors, and download & install firmware updates. When used in conjunction with the Sasquatch Plunger Velocity Sensor, Vision and Link become the industry's first Plunger Velocity Diagnostic Kit. This kit helps operators understand how the impact (kinetic energy) of a plunger at surface affects surface equipment.

Vision also includes ETC's full resource library; including application notes, certification documents, manuals, and other supporting documents and tools for our products.



### USE VISION TO:

- Upgrade and verify software on: ALiEn<sup>2</sup> (and other custom branded) plunger lift and chemical injection controllers, Cyclops, and Sasquatch
- Adjust sensitivity (beyond 7 setting external dial) on Cyclops and Sasquatch
- Monitor plunger arrivals using Cyclops and Sasquatch
- Determine velocity/kinetic energy of a plunger with Sasquatch
- View arrival information stored on Sasquatch
- Set/Get Sasquatch settings via Modbus
- Access ETC's resource library

With Vision Device Management, the latest firmware for ETC controls and sensors is always at your fingertips. To ensure producers have access to the most modern features & the best optimization algorithms, ETC occasionally releases new firmware versions for the ALiEn2 Plunger Lift Controller. Vision also allows users to safely 'see what Cyclops or Sasquatch sees' as a plunger arrives in the lubricator, which can help users determine the cause of false detects or missed arrivals on a problem well.

Upgrading software on any ETC product is simple and quick with Vision. As new versions are released, the latest software is automatically downloaded right to your PC when the utility opens.

### VISION IS CURRENTLY COMPATIBLE WITH THE FOLLOWING ETC PRODUCTS:

- ALiEn<sup>2</sup>
- Cyclops
- Sasquatch



---

[www.ETCorp.ca](http://www.ETCorp.ca)